

TripleHard mining

- Comprasion with Cr6 and TripleHard
- Cr6: Base material AISI 329 and 20MnV6
- TripleHard 20MnV6 normal steel
- Very demanding environment in Australian mining
- Salt and high temperature

20MnV6 + Cr6

- After 2 months
- 20MnV6 base material
- Easy to see a lot of rust

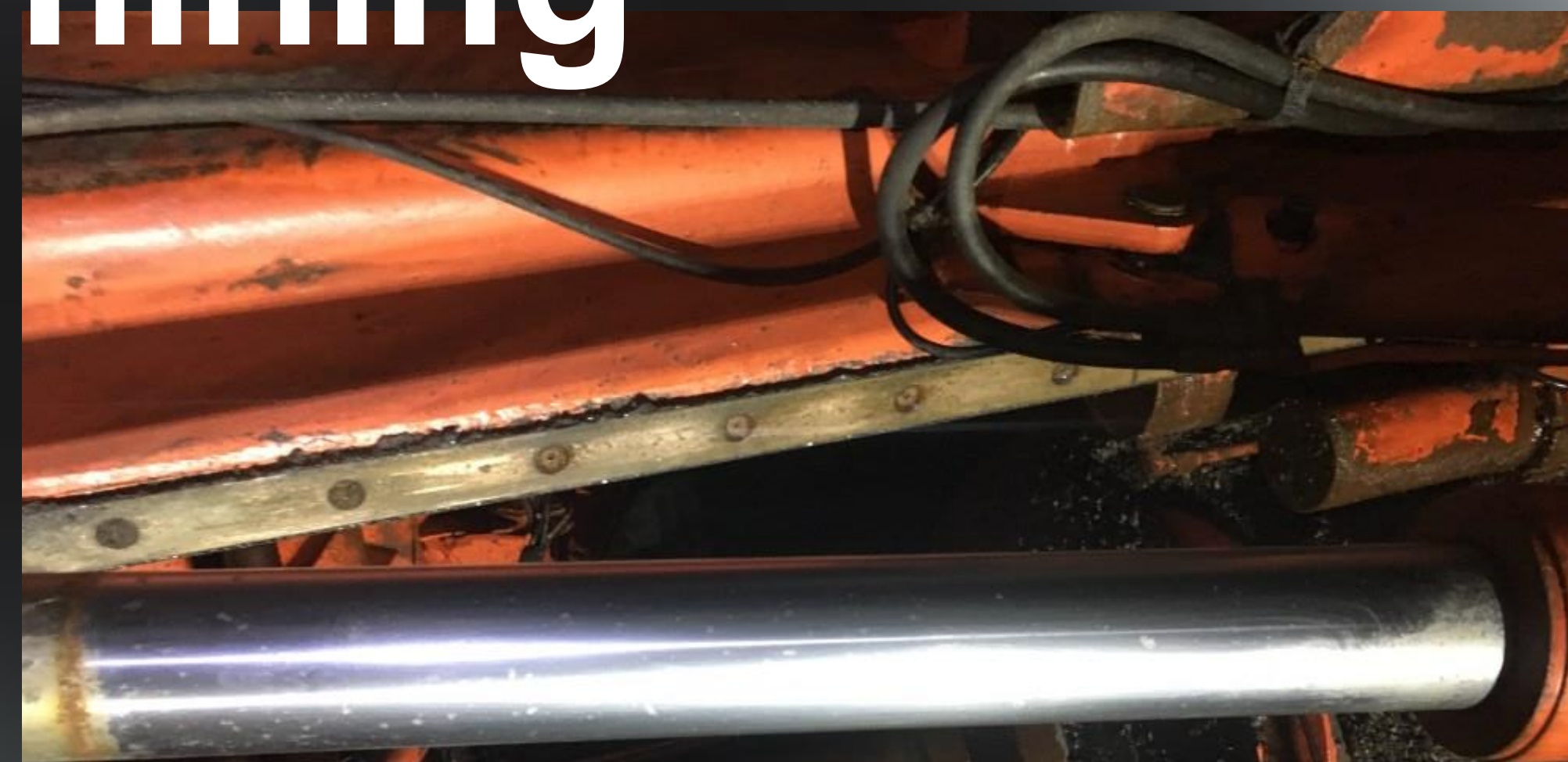
**Need to change the
cylinder**



AISI 329 + Cr6 mining

- After 4 months
- AISI base material
- Easy to see rust

**Even stainless steel
rod is rusty**



20MnV6 + TripleHard

- After 34 months
- Normal steel base material
- NO RUST

TripleHard is much better than Cr6 with AISI base material



Comparision rods: 1m d 60 mm

SAMPLE	BASE MATERIAL	LIFE TIME	BASE MATERIAL PRICE	COATING PRICE	TOTAL PRICE	CYLINDER ROD PRICE AFTER 1 YEAR	CYLINDER PRICE AFTER 1 YEAR FOR END CUSTOMER	PRICE AFTER 3 YEARS FOR END CUSTOMER
CR6	AISI 329	<4 MONTHS	110 €	35 €	145 €	290 €	4050 €	12150 €
CR6	20MnV6	< 2 MONTHS	22 €	35 €	57 €	342 €	6300 €	18900 €
TRIPLEHARD	20MnV6	> 4 MONTHS	22 €	78 €	100 €	100 €	0 €	0 €